

What's NEW in VCS 9.3.1

IMPORTANT! - Licensing is NOT included in software shipments. See "How to get a license" below for details.

December 16, 2022

Dear VERICUT® Composites Simulation User:

Thank you for your continued investment in VERICUT Composites Simulation (VCS), an important part of your NC programming and machining process!

VERICUT Composites Simulation 9.3.1 is packed with new features making it more powerful and easier to use. This letter describes important changes in VERICUT Composites Simulation 9.3.1. Please take a moment to review what's new and improved in this release.

Maintenance and Licensing Information

NOTE: This software requires VERICUT 9.3 licensing and [Sentinel 9.8.1 License Server installation](#).

To Get a License – use the link below to submit a License Request:

http://www.cgtech.com/vericut_support/request-license/.

Licensing is sent via email only.

VCS 9.3.1 runs on 64-bit Windows, and is supported on Windows 10 computers. It is not available for 32-bit Windows computers.

Software maintenance keeps you on the cutting edge - CGTech provides update software to customers with current software maintenance. Your continued maintenance ensures that you have the most advanced verification technology available. If your maintenance has expired, please contact your CGTech representative (<http://www.cgtech.com/about/contact-us/>).

Sincerely,

Olivier Munaux

CGTech VERICUT Composites Product Manager

VCS 9.3.1 Release Notes

Enhancements in VCS 9.3.1

Added the ability to Save and Print the Tape Laying Head Statistics has been added.

	Time (H:MM:SS)	Time Laying Tape (H:MM:SS)	Minimum Tape Remaining (inches)	Length (inches)	Area (sq in)	Weight (lb)
Head 1	0:17:44	0:06:34	56223.50	40988.70	10247.18	0.17

Added the ability to set a tolerance for “Tape roller motion crosses itself” errors - to reduce unnecessary errors in the Logger.

Problems Resolved in VCS 9.3.1

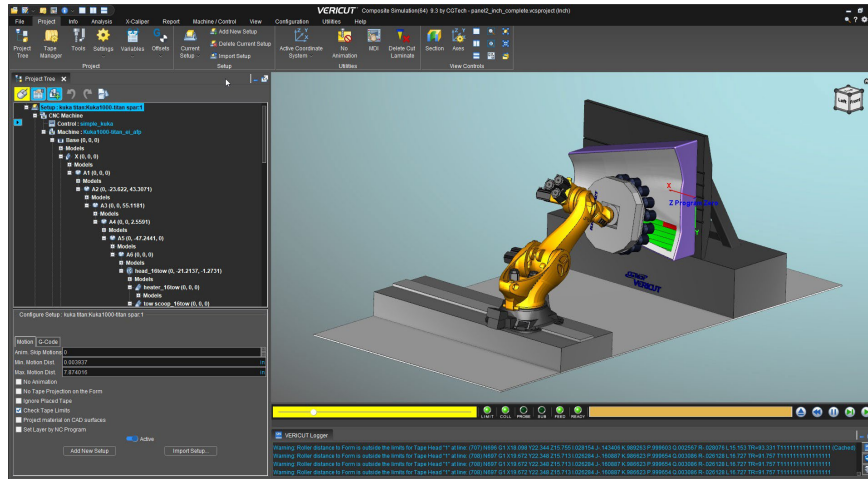
An issue causing incorrect scaling of Display Pins when using the **DisplayPin** macro has been resolved.

An unexpected exit of VCS while using X-Caliper -> Stack Thickness has been resolved.

VCS 9.3 Release Highlights

Dark mode color scheme

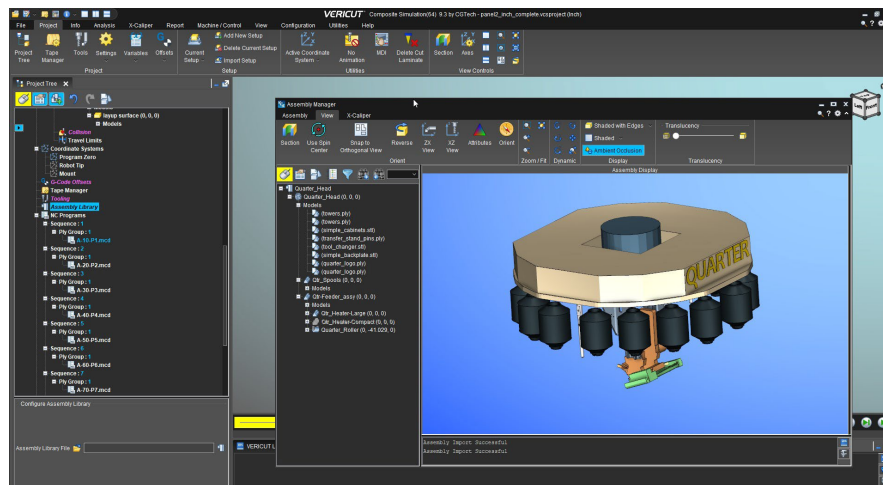
VERICUT now supports a Dark Mode color theme (Configuration tab > Preferences) for users that prefer darker colors for easing eye strain



Assembly Manager

The Assembly Manager has been given several new abilities. Build and manage component assemblies using a project tree-like structure, verify assemblies via Section views and X-Caliper measurements, and filter based on assembly description and Undo/Redo of changes made to component assemblies.

Use the Jog function to test motion directions, axes of movement, and kinematics for each assembly. There are many more enhancements such as a drag & drop assemblies to VERICUT Project Tree, Configure panel updates to describe component attributes, Travel Limits, etc. and Axes display options.



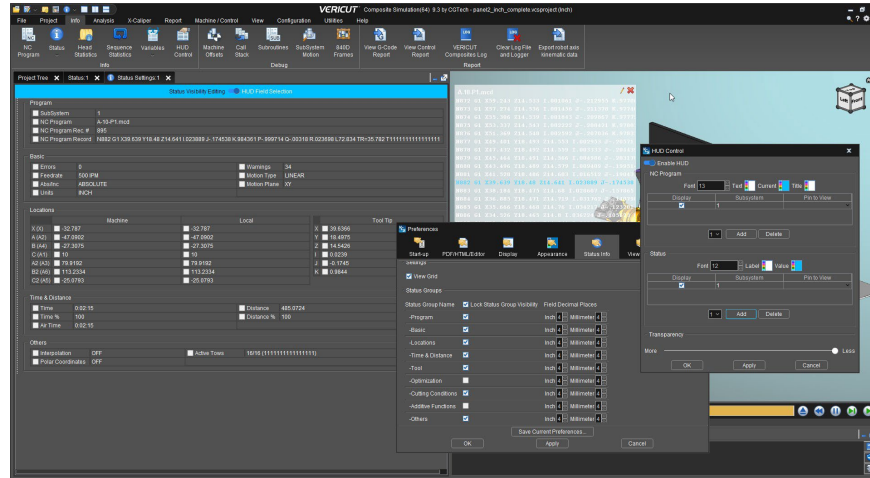
VCS Release Notes

Status and HUD Improvements

The Status window and Head Up Display (HUD) have been enhanced so users can streamline the machining and simulation information presented in these features.

Locations tables offer more control over columns and registers that are visible, and “Field Visibility Edit Mode” enables concurrent editing Status and HUD configurations.

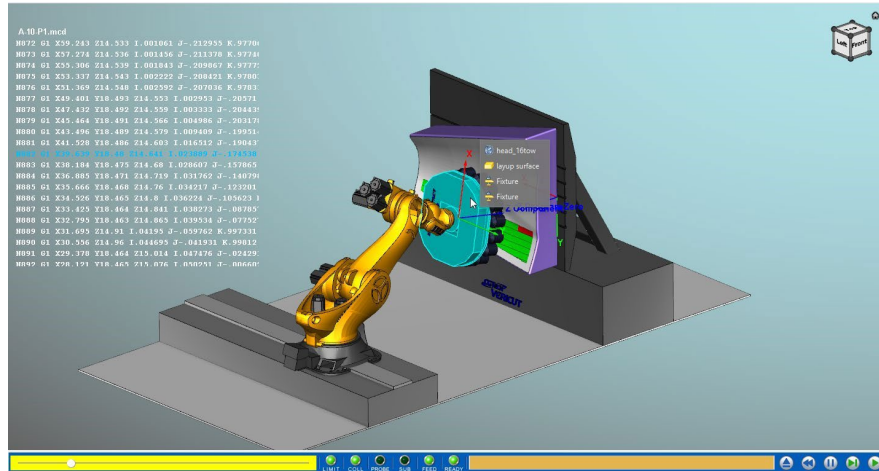
Users can lock and unlock the visibility of status groups to retain a familiar layout for future VERICUT sessions.



Model selection/focus features

A new right mouse button menu option “Focus on Selected Models” has been added to enable users to temporarily hide extraneous models from the graphics display, to more easily access the selected model. The hidden models are quickly and easily restored via using the [Esc] key, or the right mouse button menu option “Remove Focus on Models”. Another modeling convenience added is Right+Left mouse button then drag to create a region box that graphically selects all the model(s) within the region.

VCS Release Notes



Enhancements in VCS 9.3

Rotisseries can now be simulated using multiple rotaries.

Added ability to log **Near Over Travel** instances in Logger.

Added ability to export Tape Laying Head Statistics to CSV file.

Added ability to export Tape Laying Sequence Statistics to CSV file.

Added ability to invert the order of TapeCacheTows when required.

Enhanced report generation, Material Usage Table now reports information per-ply.

Enhanced simulation of compaction axis motion.

Multiple enhancements to Wide Tape simulation have been made.

Enhancements to X-Caliper and Tape Thickness measurements.

Training sessions added to the Welcome screen.

Problems Resolved in VCS 9.3

An issue where roller component orientation caused cut/lay issues has been resolved.

Sorting of Sequences in NC Program window has been corrected.

Simulation of knife paths now correctly simulates in review mode.

An issue with collision checking against previously laid courses has been corrected.